

Tenor

Deborah Cheetham AO

Christmas With You

**Christmas With You
Deborah Cheetham**

**Can you find your way home Christmas night?
There is a star to guide you
It shines with the light I hold in my heart.
O can you find your way home Christmas night?**

**Can you find your way home Christmas Day?
There's so much more I want to tell you
so much more to say
O can you find your way home Christmas Day?**

**We've been apart for so long now
This year has come and gone somehow and
suddenly the summer days are here bringing Christmas**

**Can you find your way home Christmas Eve?
I had never thought you would leave
perhaps a star can guide you home this year
light the way and draw you near
How I wish that you were here
for Christmas, Christmas eve**

**I need no gift beneath the Christmas tree this year
Christmas with you is all I truly need my dear**

Dedicated to everyone who has been parted from those they love in this year of loss and chaos.
Deborah Cheetham AO

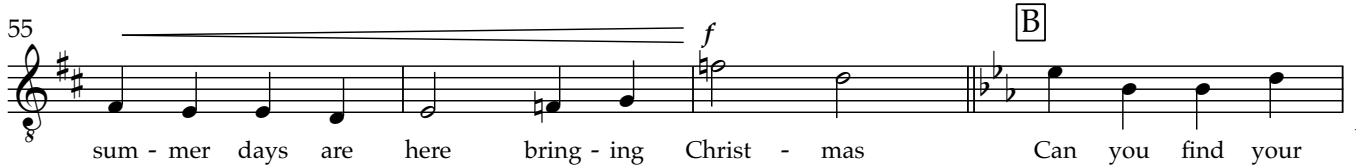
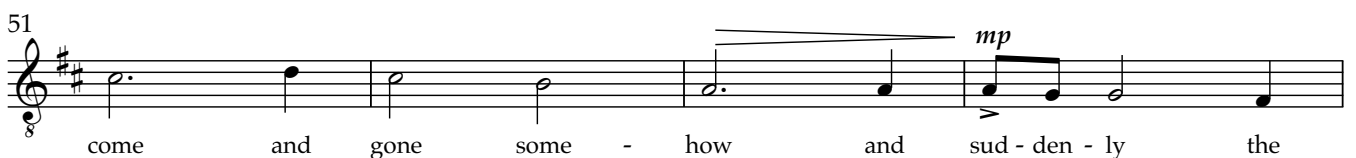
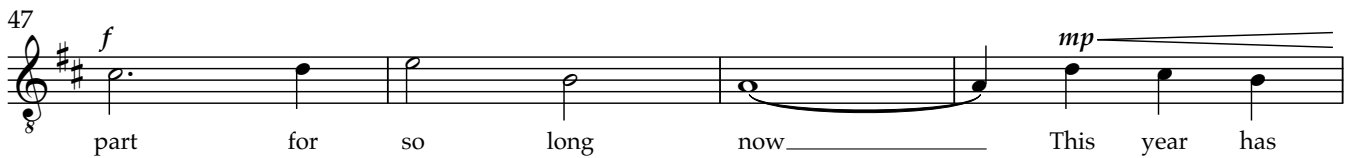
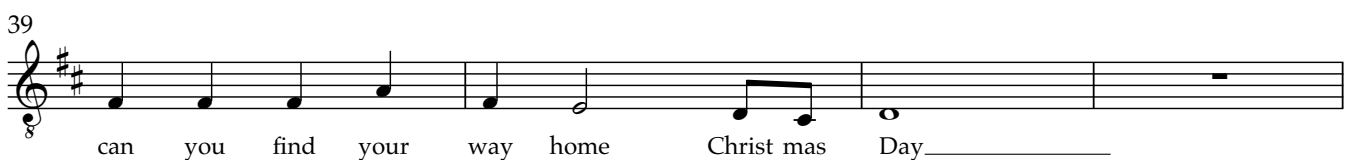
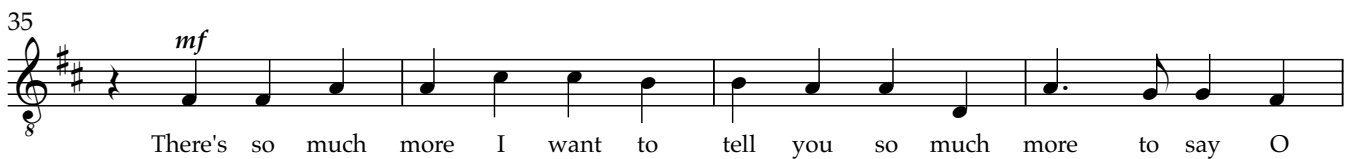
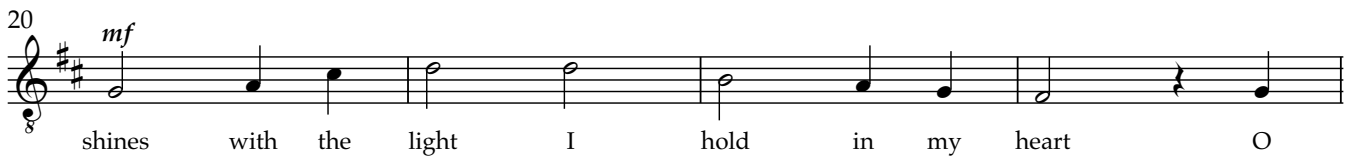
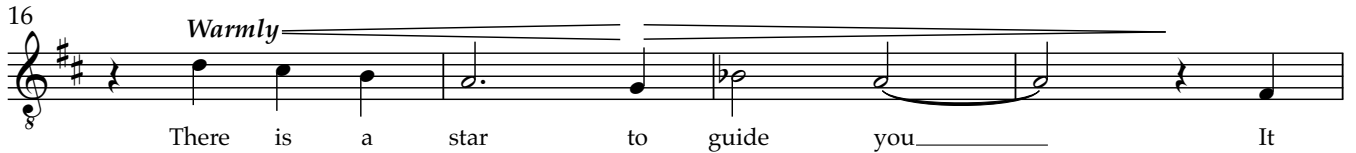
Christmas With You

Commissioned by ABC Classic to bring our community together in song
at the end of an extraordinary year

Lyrics and Music
Deborah Cheetham AO

Moderato ♩ = 102

15



V.S.

59

way home Christ-mas Eve?_____

63

f I had ne - ver thought you'd leave per - haps a star can

67

guide you home this year light the

71

way and draw you near to me_____ O_____

75

How I wish that you were here for

79

Christ - mas for Christ - mas_____ eve for Christ - mas eve

83

mp I need no gift be - neath the Christ - mas tree this year_

87

molto rall.
mf dolceissimo Christ - mas with you is all I tru - ly need my dear

91