

The Mandy Boat Tee Pattern



Mandy Boat Tee - This oversized boxy top, has a boat neckline and $\frac{3}{4}$ fitted sleeves with drop shoulders. This top is perfect for all seasons and is ideal made up in cotton, wool, viscose, linen knits.

Sizes included: (AUS sizing) One Size Fits All

Pattern Pieces:

Front - cut 1 on fold

Back - cut 1 on fold

Sleeve - cut 2 pair

Notions: Knits with or without elastane, Thread, 2.75mm stretch twin needle.

Meterage for Mandy Boat Tee

Size One Size Fits All - (140cm) 1.10mts

Finished Length of Mandy Boat Tee 23.5" or 60cm (from Centre Back Neck): (Note: You can lengthen or shorten this top).

Finished width around Bust - 58" (148cm)

Seam Allowance: This top is to be sewn on an overlocker/serger with neckline and hems sewn with 2.75mm stretch twin needle on a sewing machine **NB:** seam allowances are included and are $\frac{3}{8}$ " wide (overlocker seam width). Please take the seam allowances specified in sewing instructions.

Sewing Level for this pattern: suitable for all sewing levels.

Mandy Boat Tee Sewing Instructions

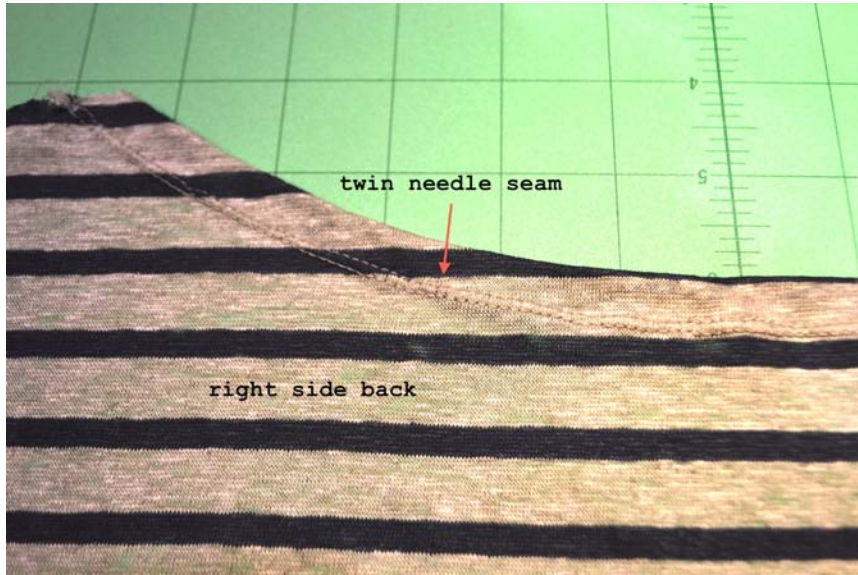
Please read instructions thoroughly before cutting and sewing.

Step 1: Turn back front and back necklines and pin 5/8" towards wrong side of garment.

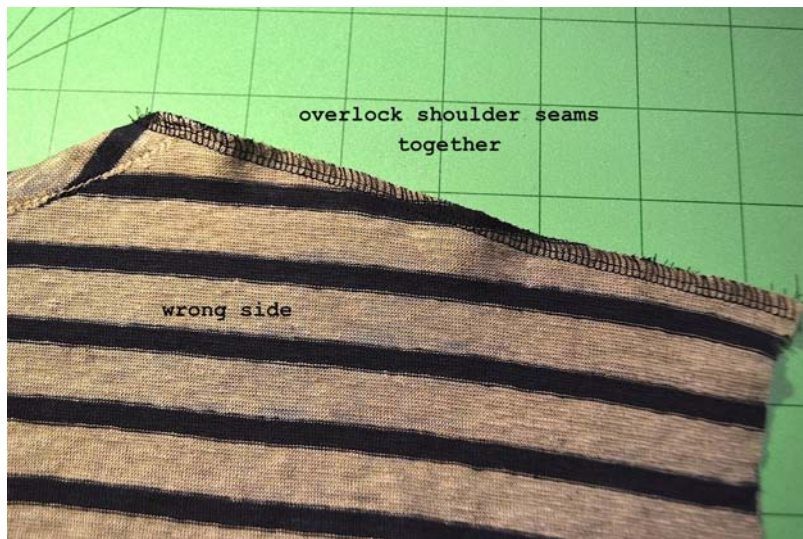


Step 2: Transfer pins to right side of front and back necklines and sew 5/8" seam with 2.75mm stretch twin-needles. Make sure to sew with right side of neckline facing up.





Step 3: Pin front and back shoulders with right sides together and then overlock seams together.



Step 4: Pin sleeve head around armhole edge with right sides together. Overlock seams together taking 3/8" seam.



Press seam towards top.

Step 6: With right sides together, pin front to back at the side seams and sleeve seams, matching seams at the underarms. Overlock seams together taking 3/8" seam. Press seam towards the back.



Step 6: Turn back sleeve hem and body hem 5/8" towards wrong side and pin in place on right side. Sew around hem on top and sleeves with 2.75mm stretch twin-needles. Make sure to sew with right side facing up and sewing at 5/8" seam.



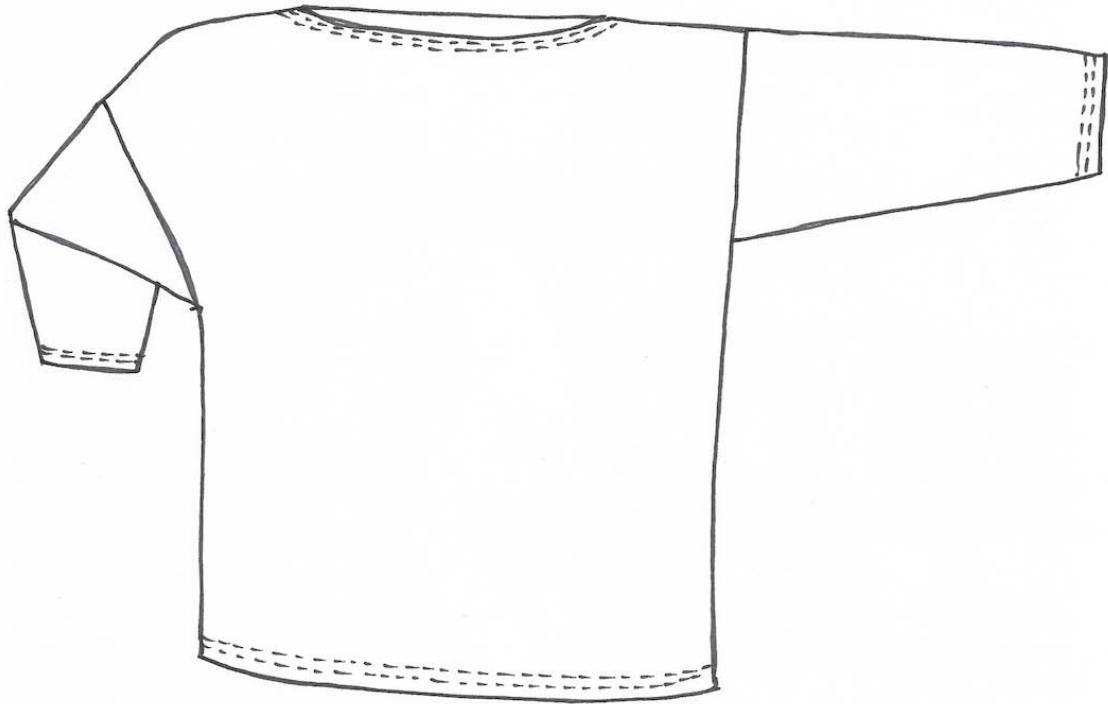
Step 7: Turn top inside out to wrong side. At each edge of neckline, sew a seam starting $\frac{1}{2}$ " down from edge and sewing at an angle (like a dart) approx 1-1 $\frac{1}{4}$ " across to finish to nothing at shoulder seam.



This will give a beautiful finish to your boat neckline on the right side and keep the seam anchored away.



You're finished. Enjoy wearing your Mandy Boat Tee!



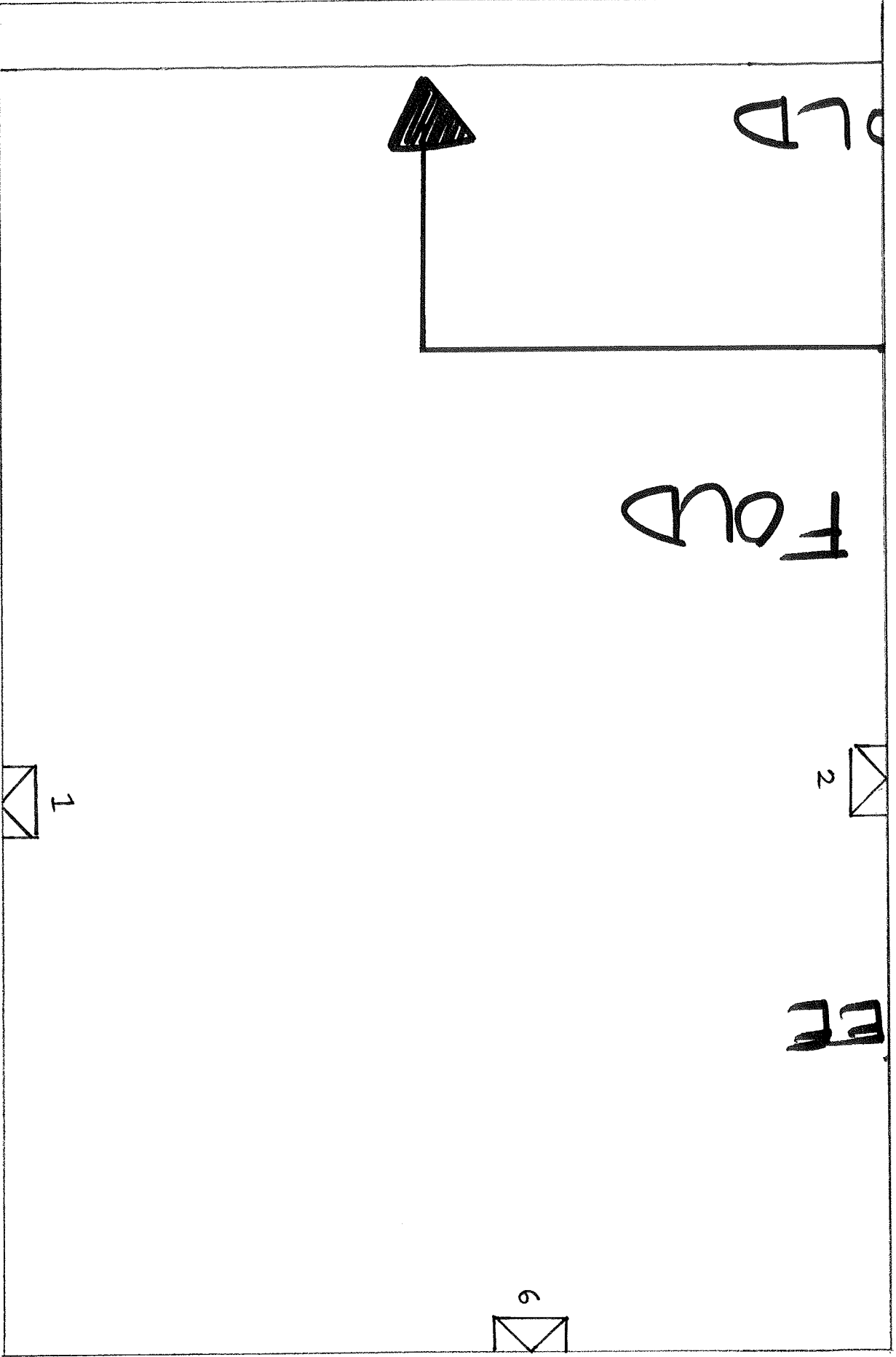


1

SHORTEN OR LENGTHEN THROUGH

5





CENTRE BACK FC

CUT I ON

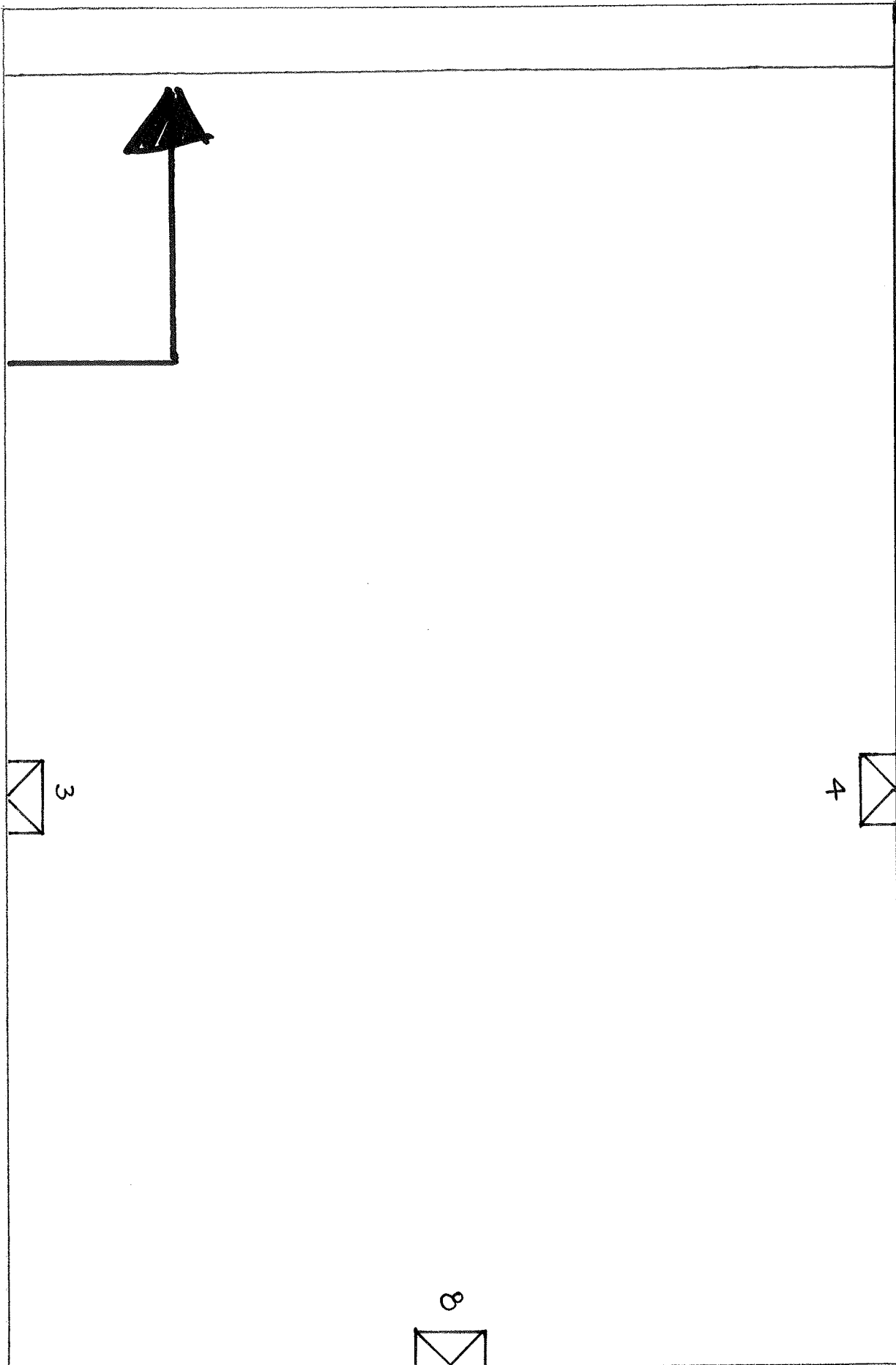


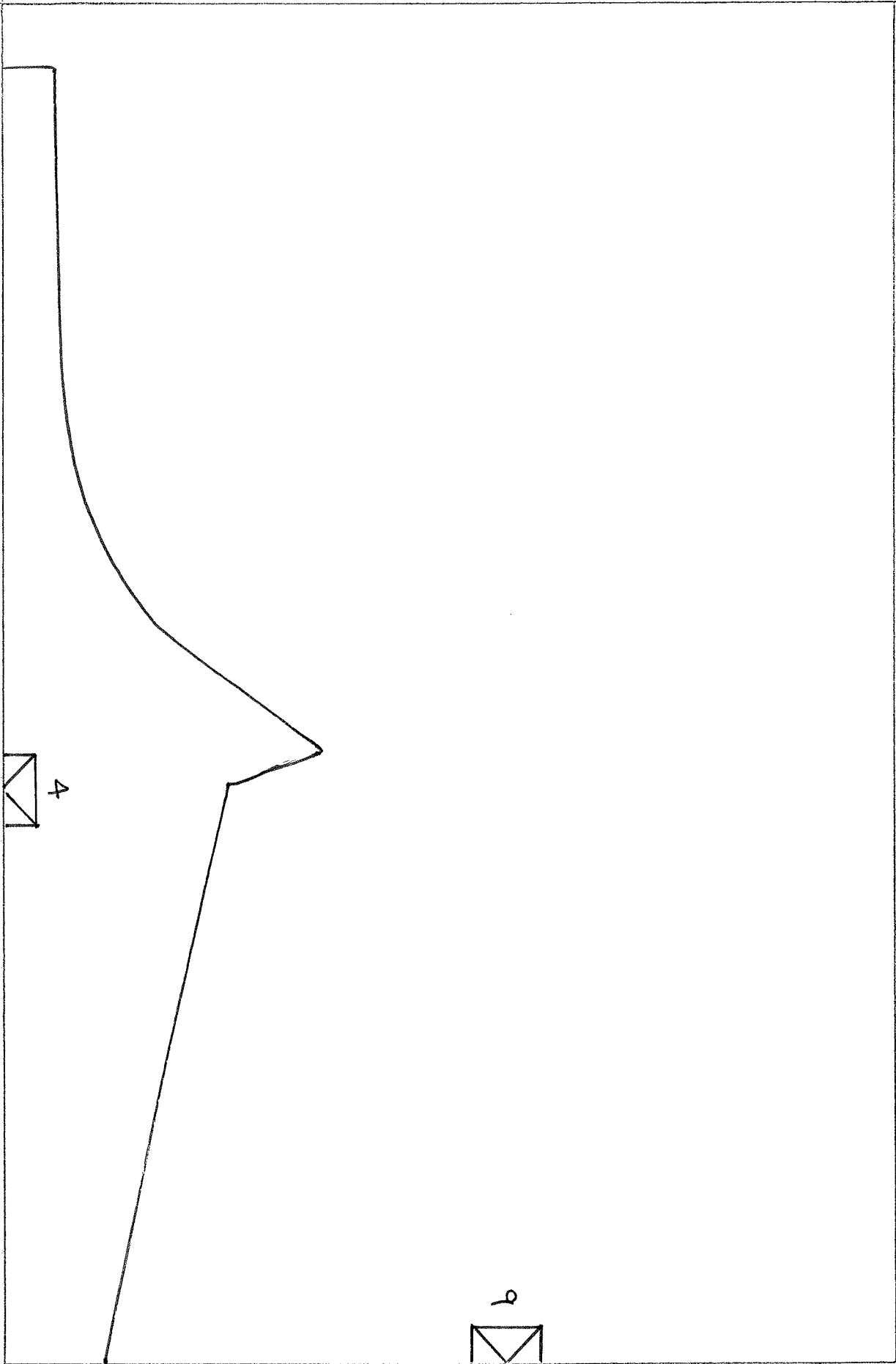
ONE SIZE

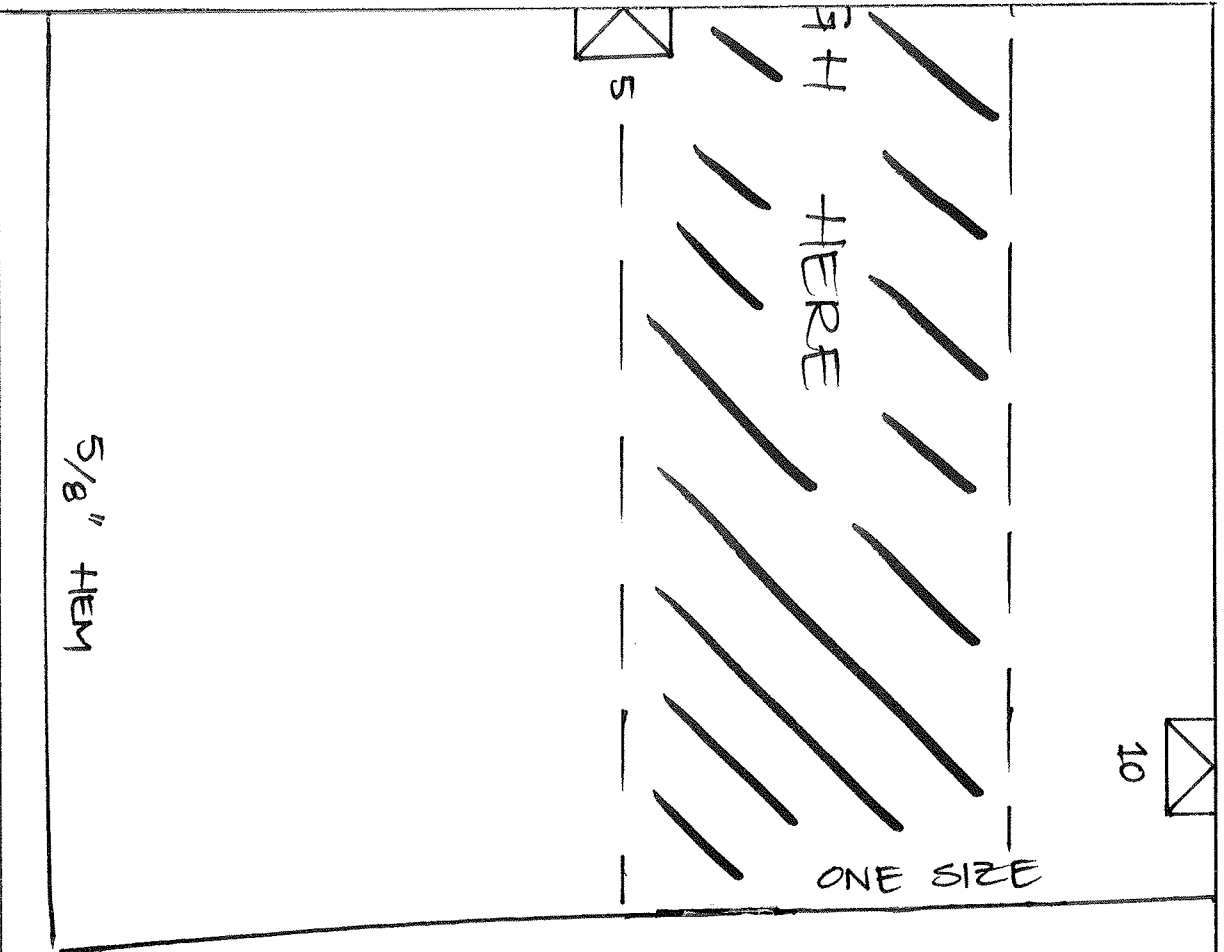


MANDY BOAT T









TEST SQUARE

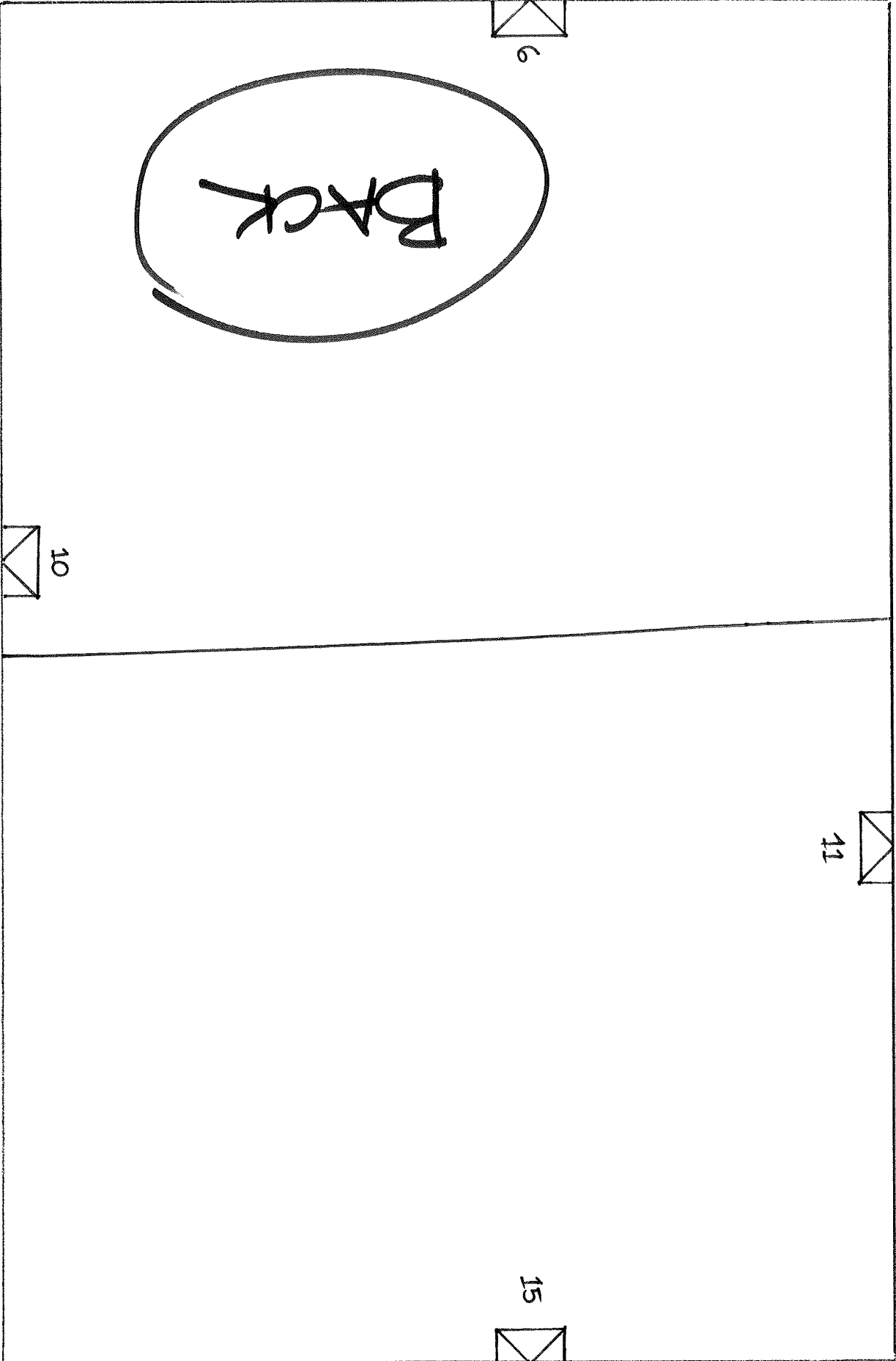
10 CM x 10 CM

OR

4" x 4"

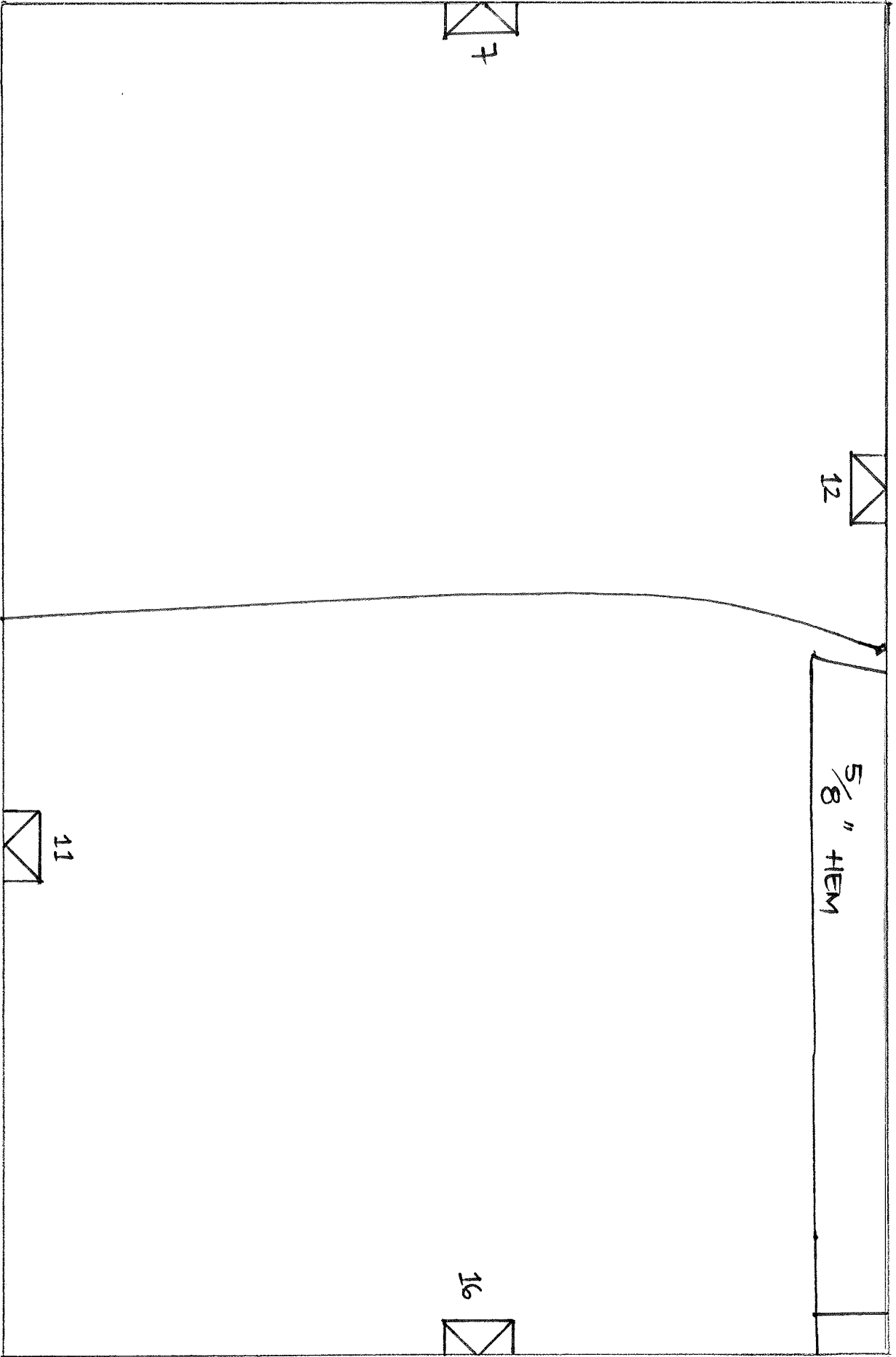
TEST SQUARE

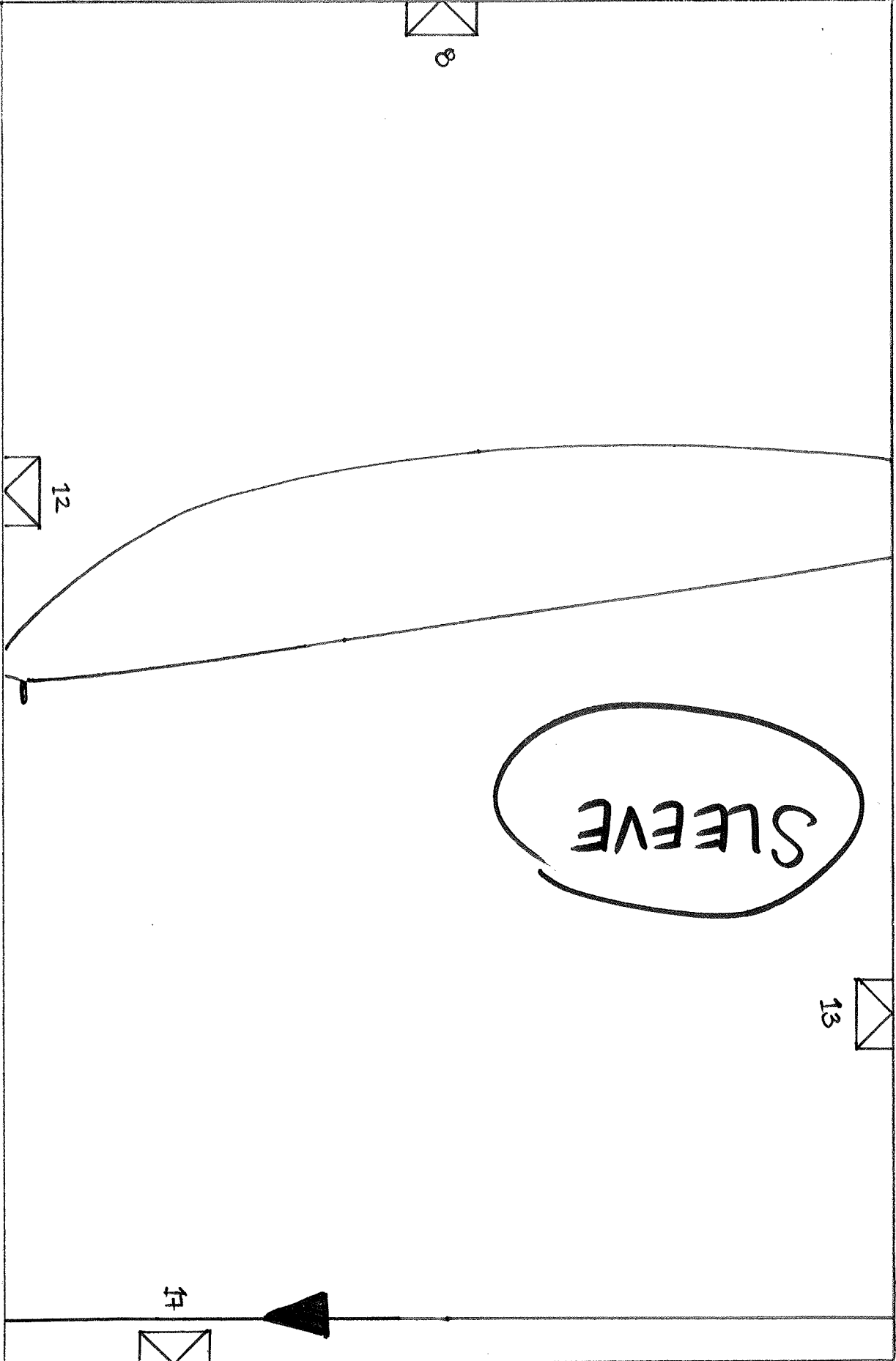


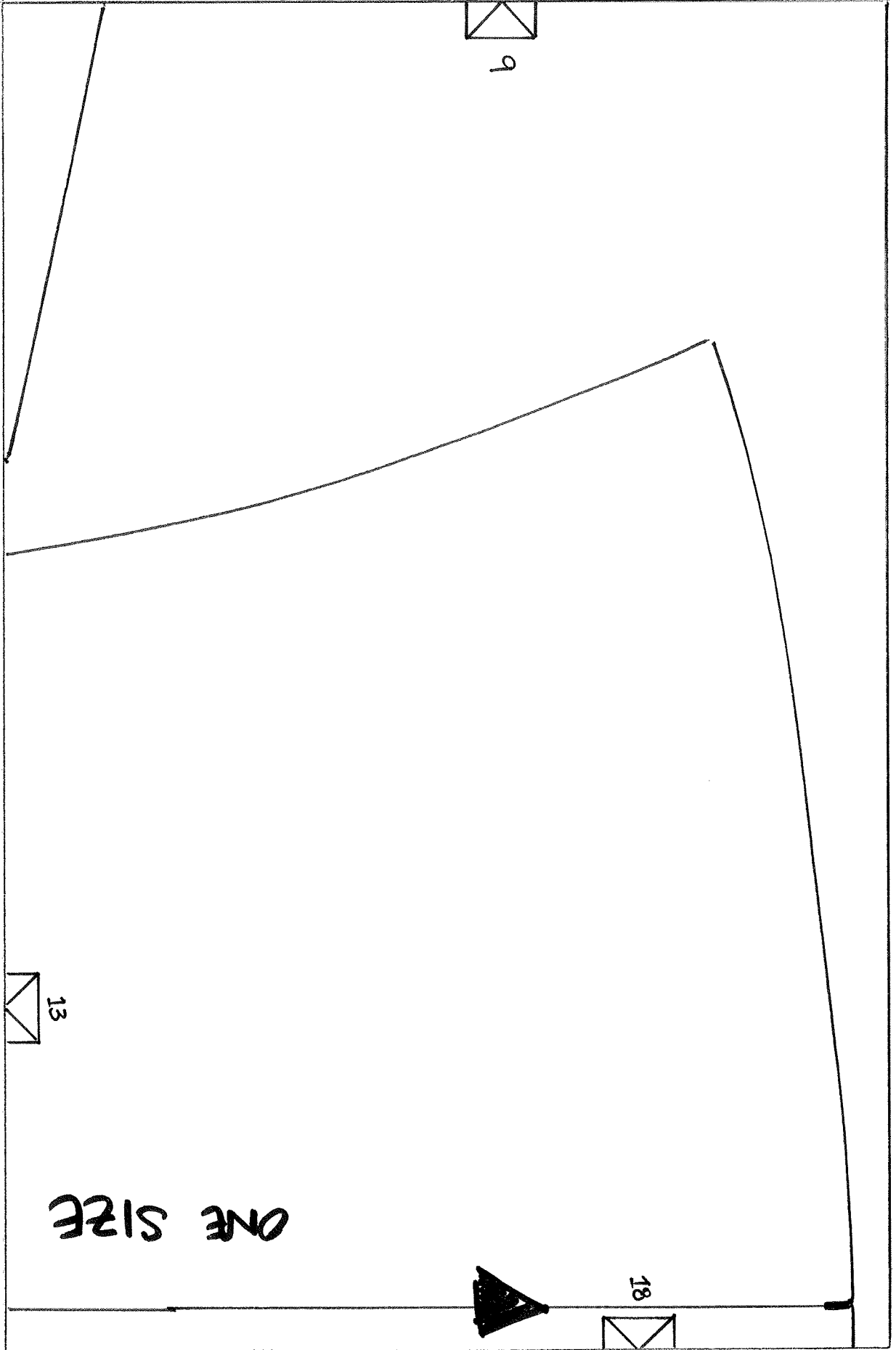


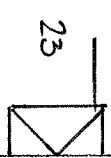
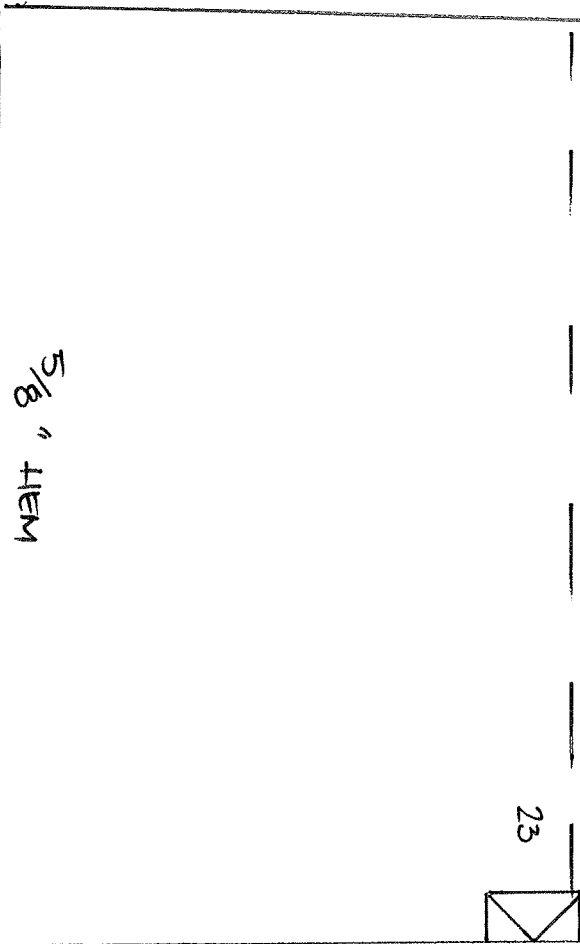
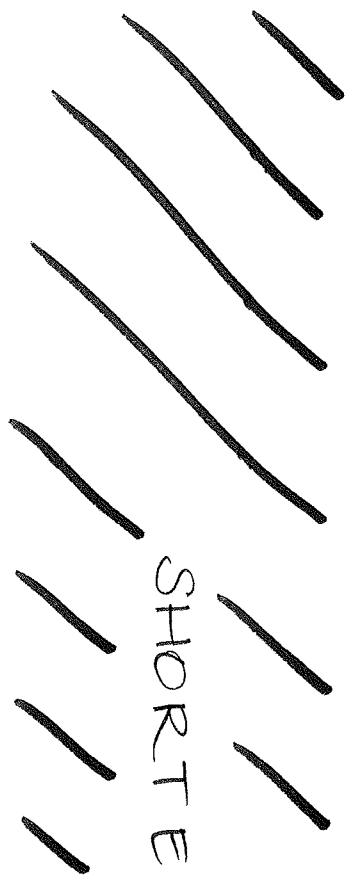
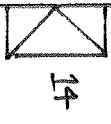
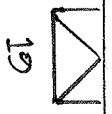
BACK

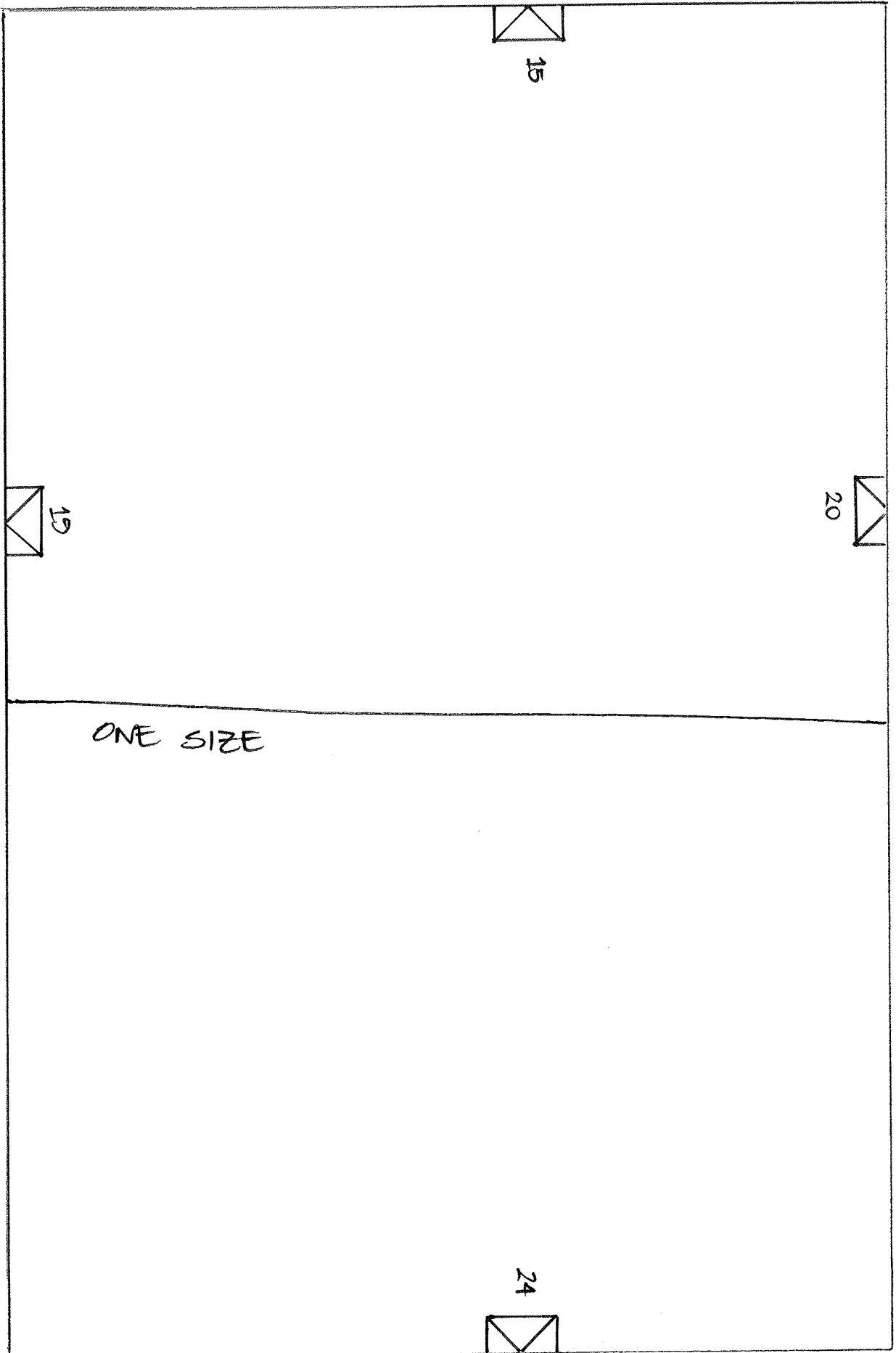


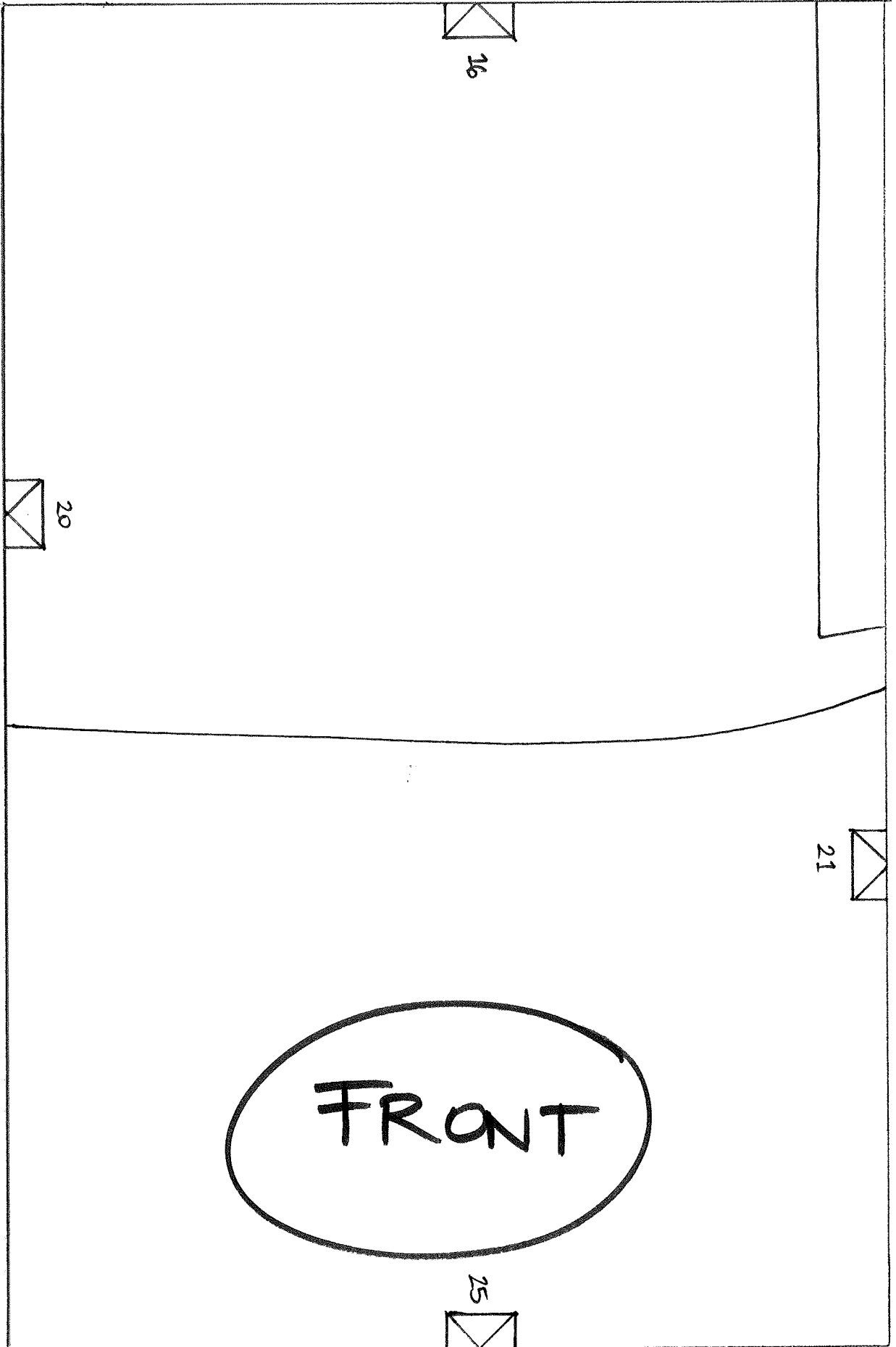




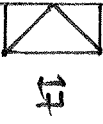




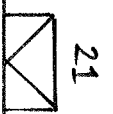
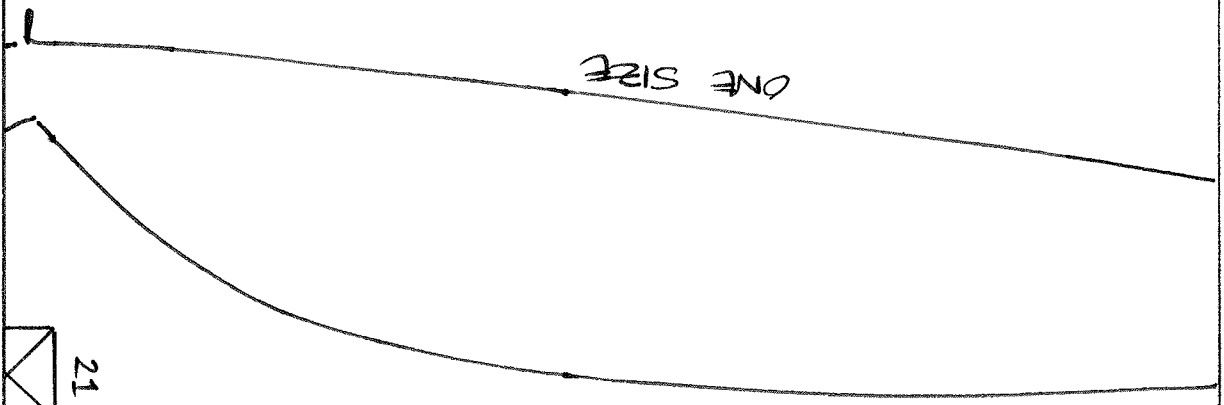




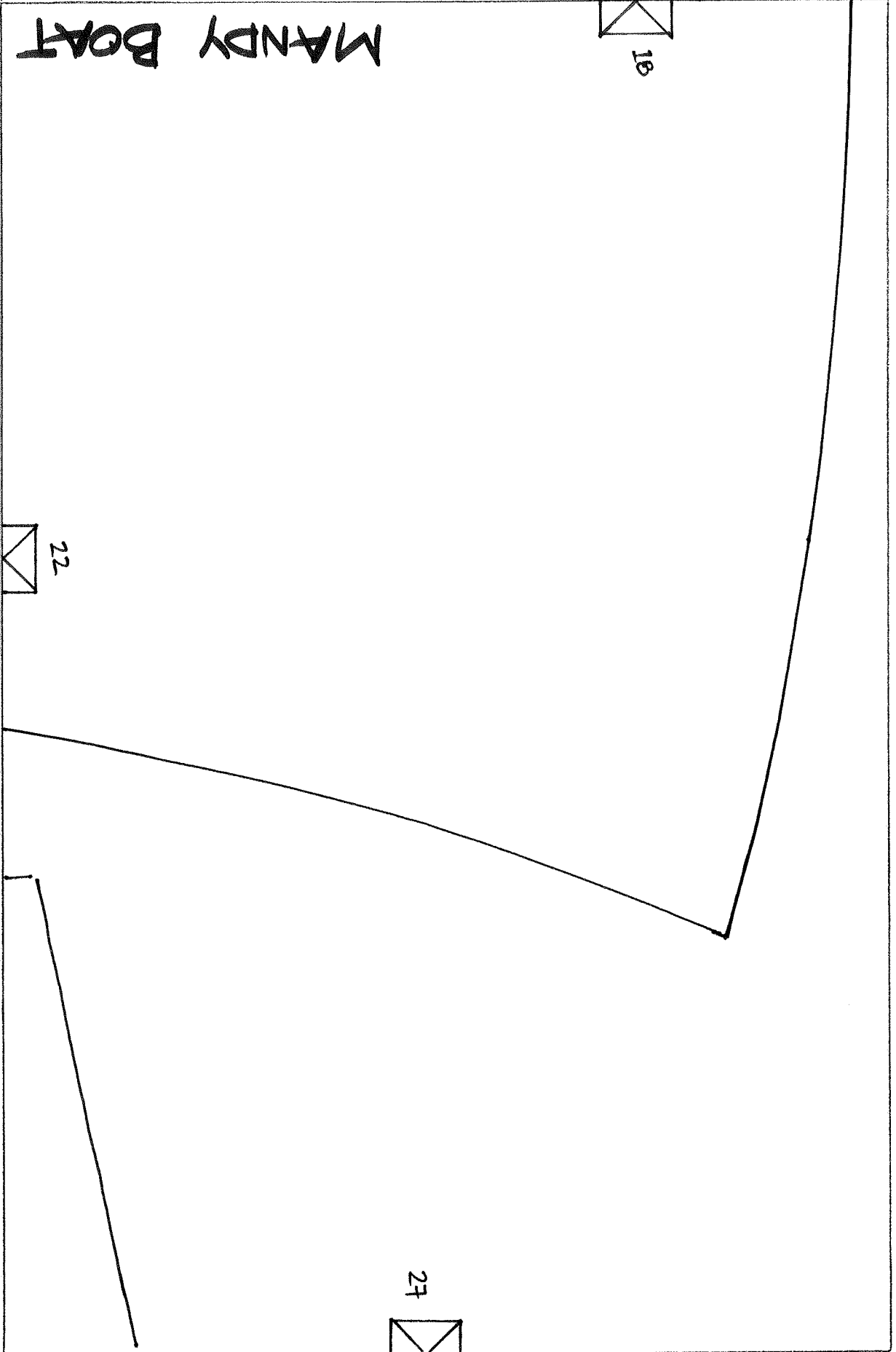
TEE - CUT 1 PAIR



ONE SIZE



MANDY BOAT





28



N OR LENGTHEN THROUGH HERE



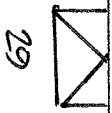
23



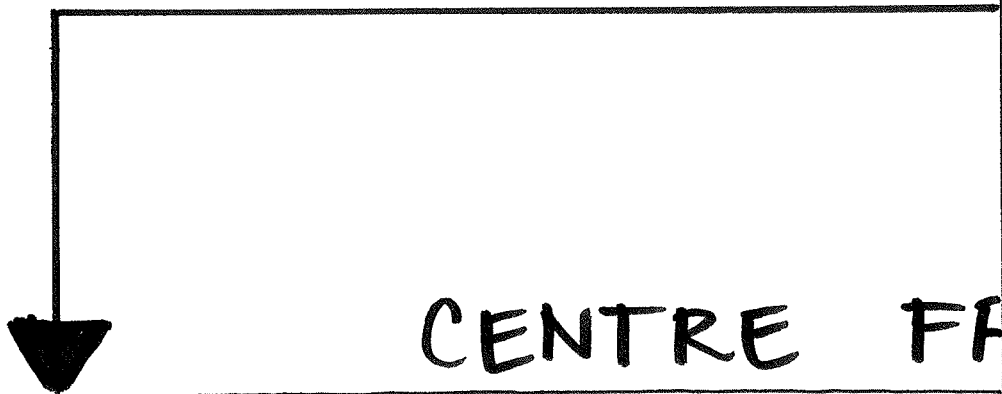
MANDY BOA



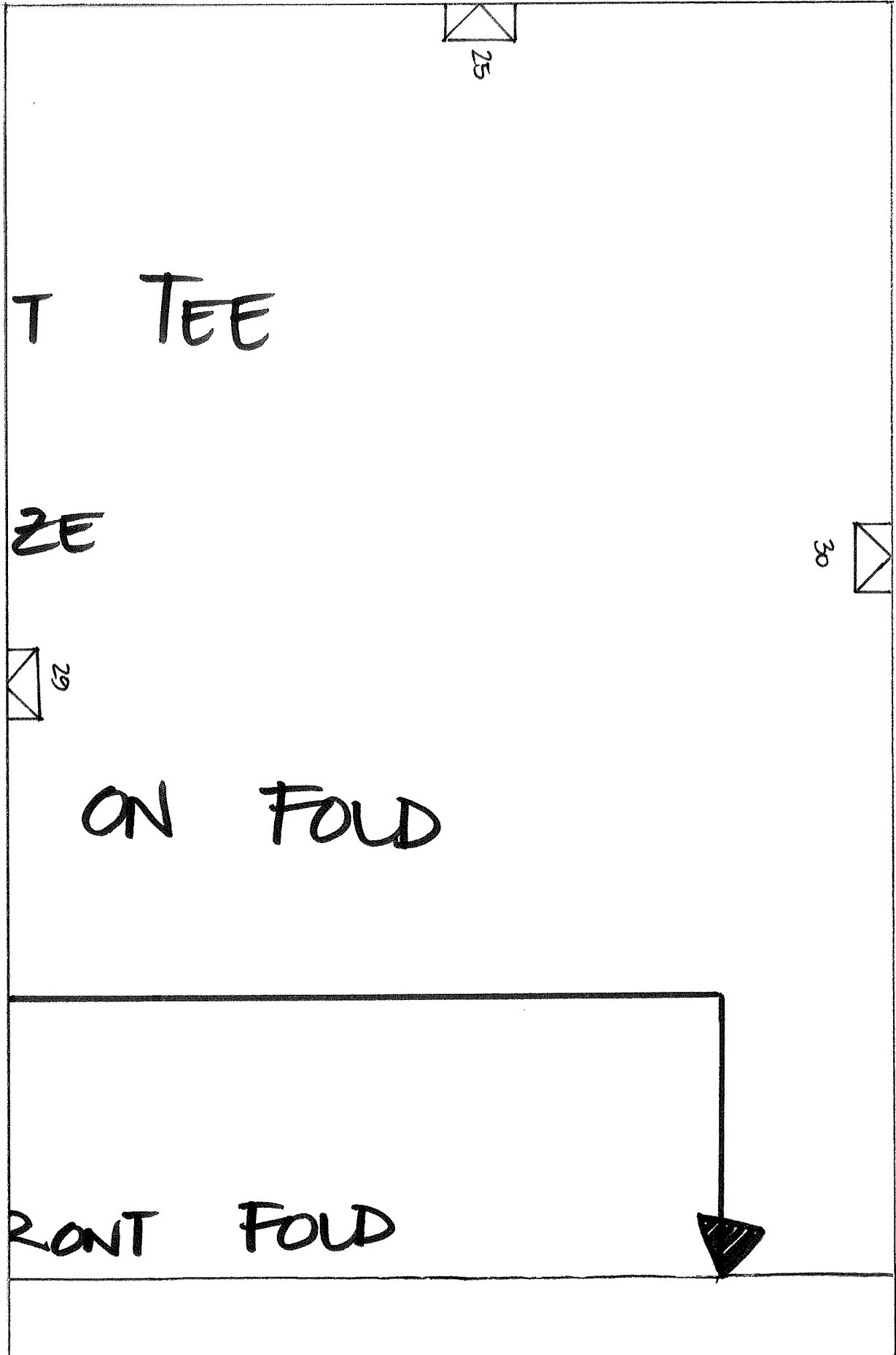
ONE SI



CUT 1



CENTRE FA



T TEE

2E



ON FOLD

FRONT FOLD



