



Teacher Resource

# Christmas Island Crabs

## Focus Questions

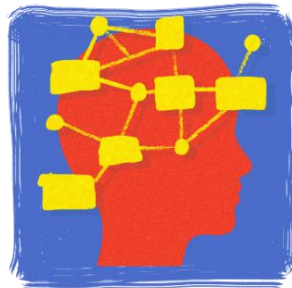
Discuss the BTN story as a class and record the main points of the discussion. Students will then respond to the following:

1. Where is Christmas Island? Find on a map.
2. Why do red crabs migrate?
3. When do red crabs migrate?
4. How do people on Christmas Island adjust their lives during the red crab migration season?
5. Name three things you learnt watching the BTN story.

## Activity: Class Discussion

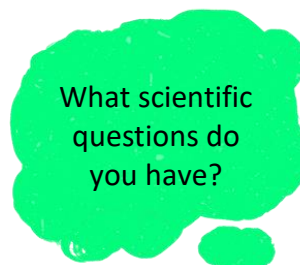
Discuss the BTN story as a class. Ask students what they learnt about Christmas Island red crabs, recording their responses on a mind map. In small groups, ask students to brainstorm responses to the following questions:

- What did you learn?
- What was surprising about the story?
- What do you wonder?
- What questions do you have about the BTN story?



## Activity: Questions and Answers

All scientific discoveries start with a question! As a class, come up with some questions you think scientists ask and solve in relation to animals and what they need to survive. As a class, make a list of questions that you would like to ask a scientist. Organise the questions into common themes. Use the internet to find answers to your class questions.



### EPISODE 33

15th November 2022

#### KEY LEARNING

Students will learn about Christmas Island red crabs and their annual migration.

#### CURRICULUM

##### Science – Year 4

Living things have life cycles.

Living things depend on each other and the environment to survive.

Science knowledge helps people to understand the effect of their actions.

Living things have structural features and adaptations that help them to survive in their environment.

##### Science – Year 5

Living things have structural features and adaptations that help them to survive in their environment.

##### Science – Year 6

The growth and survival of living things are affected by physical conditions of their environment.

##### Science – Year 7

Classification helps organise the diverse group of organisms.

##### Geography – Year 5

The influence of people, including Aboriginal and Torres Strait Islander Peoples, on the environmental characteristics of Australian places.

The environmental and human influences on the location and characteristics of a place and the management of spaces within them.

## Activity: Glossary

Students will brainstorm a list of key words that relate to the BTN Christmas Island Crabs story. Here are some words to get them started.

ECOSYSTEM	WET SEASON	POPULATION
INVERTEBRATE	CRAB MIGRATION	HABITAT

## Activity: Inquiry Research

The KWLH organiser provides students with a framework to explore their knowledge on the topic of Christmas Island red crabs and consider what they would like to know and learn.

What do I <u>know</u> ?	What do I <u>want</u> to know?	What have I <u>learnt</u> ?	<u>How</u> will I find out?

### Questions to research

Students will collect and record information from a wide variety of sources. Students may develop their own question for inquiry or select one of the questions below.

- Where do Christmas Island red crabs live? Explore their habitat and mark where they live on a map.
- What are some unique features of Christmas Island red crabs? Explore its features and write a detailed description.
- What is the scientific name for red crabs? Explore the taxonomy of Christmas Island red crabs and categorise the information you find using the classification system.
- Why do red crabs migrate?
- When does the migration of red crabs occur? Investigate when the migration starts and ends.
- How far do red crabs migrate? Investigate the journey of the red crab in more detail. Highlight your findings on a map.
- How does the migration of red crabs affect the people that live on Christmas Island?
- What features does the Christmas Island red crab have to help it to adapt and survive in the wild?
- What does a Christmas Island red crab habitat look like? Study the habitat of the Christmas Island red crab and create a diorama of its habitat.
- Where is Christmas Island? Mark where it is on a world map. What are Christmas Island's closest neighbours? What country does Christmas Island belong to?

## Activity: Red crab profile

Students will research and write a profile about the Christmas Island red crab. Students can use the animal profile worksheet at the end of this activity to record their findings. Encourage students to use a range of sources to find their information.

### Research

Students will research the Christmas Island red crab and create a profile. Students can use the Animal Profile at the end of this activity.

- Illustration or photo
- Scientific and common name
- Classification (class, family, genus)
- Appearance
- Habitat
- Where is it found?
- Feeding and diet
- Behaviours and adaptations
- Predators
- Conservation status
- Interesting facts



Students will then choose one of the following activities to complete:

- **Model** – Create a 3D model of a Christmas Island red crab or another animal native to Christmas Island using recycled materials. Display your model in your school.
- **True or false?** – Find out as much as you can about Christmas Island red crabs. Create a true or false quiz and test your classmates. Alternatively, create a word find or crossword.
- **Children's book or comic** – Write and illustrate either a children's book or comic which tells the story of the migration of Christmas Island red crabs.
- **Geography** – Where in the world do Christmas Island red crabs live? Plot on a map.
- **Brochure** - Make a brochure about Christmas Island that is informative and eye-catching. Include a list of attractions including the migration of the red crabs.



## Activity: Quiz

1. What type of animal is a Christmas Island red crab?

A. Invertebrate

B. Vertebrate

2. When do Christmas Island red crabs start their migration?

A. The beginning of the dry season

B. The beginning of the wet season

3. Approximately how many red crabs are on Christmas Island?

A. 5,000

B. 500,000

C. 50 million

4. What direction can red crabs walk?

A. Sideways only

B. Forwards and backwards only

C. All directions

5. Red crabs are native to Christmas Island.

A. True

B. False

6. How many legs do red crabs have?

A. 8

B. 10

C. 12

7. How many eggs can a female red crab release at once?

A. Up to 20

B. Up to 200

C. Up to 2,000

8. Where do red crabs migrate?

A. From the sea to the forest

B. From the forest to the sea

C. From Christmas Island to Australia

9. What type of climate does Christmas Island have?

A. Tropical

B. Dry

C. Temperate

10. Which country does Christmas Island belong to?

A. Australia

B. Indonesia

C. Malaysia

Quiz Answers:

1A, 2B, 3C, 4C, 5A, 6B, 7C, 8B, 9A, 10A

## Useful Websites

- [Red Crab Migration](#) – Parks Australia
- [Christmas Island Red Crab](#) – National Geographic Kids
- [Red Land Crab](#) – Australian Museum
- [Christmas Island's red crabs scuttle from rainforest to coast in their millions as annual migration begins](#) – ABC News
- [Christmas Island National Park](#) – Parks Australia

# ANIMAL PROFILE

Scientific Name

APPEARANCE

Common Name

ADAPTATIONS

Unique Features or Interesting Facts

HABITAT

THREATS