



THE KANGAROO BEACH CHRISTMAS STAGE



METHOD

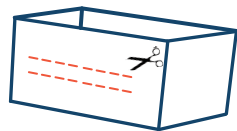
1 Carefully cut out the background and the Kangaroo Beach characters: Pounce, Neville, Frizzy, Gemma, Big Trev and the sled.

2 Take the lid off of your shoe box and set aside. Glue the background onto the back of the box.

3 Get a grown-up to carefully cut two slits at the top of the box (on the longer, horizontal side) from one end to the other. Be careful not to make the slits too wide.

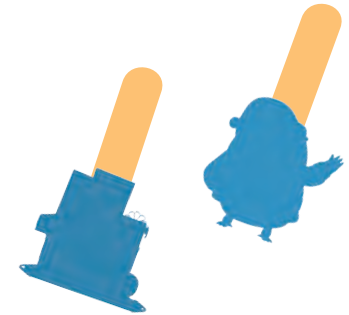
4 Glue an ice-cream stick onto the back of each Christmas character. Make sure that a lot of the stick pokes out.

5 Slide the top of the ice-cream sticks through the slit at the top of the box.



WHAT YOU'LL NEED

- Adult assistance
- 6 ice-cream sticks
- Glue
- Scissors
- Shoe box
- Cotton balls



6 Line the inside of the box with snow by gluing down cotton balls.

7 Decorate the outside of the box with stickers and drawings. If you have glitter, give your diorama a touch of magic sparkle!

8 Finally - bring your favourite cadets to life on the stage! Play, have fun and show your friends and family your new diorama!





Gemma



Pounce



Big Trev



Neville



Frizzy

