



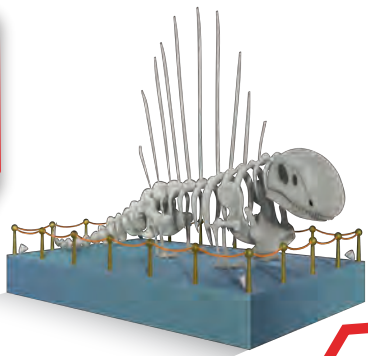
MEET... NEWTON STAR

Star Power!



TICK THE CORRECT ANSWER

Newton likes to read at the...



MUSEUM



LIBRARY



PLAYGROUND

MATCH THE SHADOWS TO THE CORRECT ASTEROID

Newton can control asteroids!



A matching puzzle where three dark blue shadows with white question marks are on the left, and three glowing asteroids (blue, orange, purple) are on the right. A dotted line with a pencil tip at the end connects the top shadow to the blue asteroid.

ANSWER: LIBRARY



www.abc.net.au/abckids